



Nest Identification

There are several species of cavity-nesting birds that will nest in martin housing. Examining the eggs and nesting material can offer clues as to which species is residing in your martin housing. Nests of non-native species should be removed. For information on managing native species visit purplemartin.org.

Native Nests

Purple Martin

Nest— Nests are constructed from twigs, straw, and needles and may include mud at the front of the nest. Nest cup is lined with green leaves. Nests can differ between adults and subadults—subadults may build a sparser nest, containing only a few pieces of nesting material and green leaves.

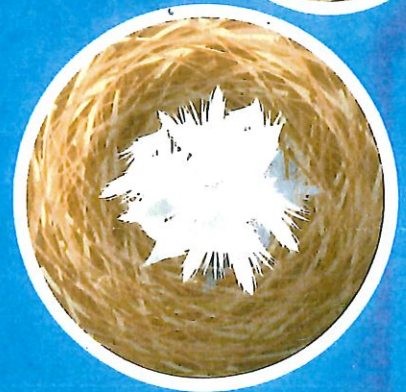
Eggs— Eggs are pure white and slightly tapered. 2-6 eggs, 24.5 mm x 17.5 mm.



Tree Swallow

Nest— Nests are constructed from straw and fine grasses—profusely lined with feathers.

Eggs— Eggs are pure white and rounded. 4-7 eggs, 18.7 mm x 13.2 mm.



Eastern Bluebird

Nest— Nest is constructed from grasses, straw and weed stalks.

Eggs— Eggs are pale blue (in rare cases may be white), and rounded. 2-7 eggs, 20.7 mm x 16.3 mm.

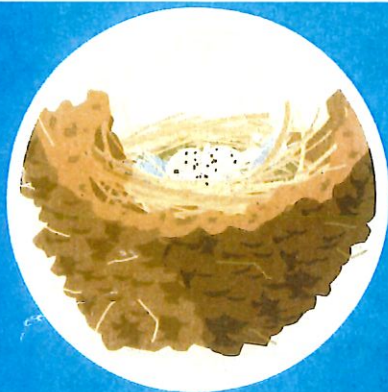


House Wren

Nest— Bulky nests made with twigs and topped off with cup of grasses, plant fibers, feathers and hair—may build several nests of twigs.

Eggs— Eggs are small and white and thickly speckled with cinnamon-brown dots. 3-10 eggs, 16.4 mm x 12.7 mm.





Barn Swallow

Nest— Nests are made from mud and lined with fine grasses or feathers. Found in the corners of buildings, porches or decks.

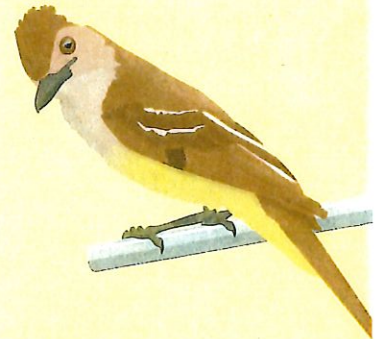
Eggs— Eggs are white with brownish speckles. 3-7 eggs, 18.8 mm x 13.5 mm.



Great Crested Flycatcher

Nest— Nests are constructed from twigs, leaves, hair, feathers, bark fibers and trash. Almost always includes a shed snakeskin or piece of cellophane.

Eggs— Eggs are yellowish or pinkish-white and have streaks or blotches of dark brown or purple, usually near the tip. 4-8 eggs, 22.6 mm x 17.2 mm.



House Finch

Nest— Nests are constructed from weeds, grass stems, thin twigs, rootlets, string, wool or feathers. Finer materials are used to line the nest cup.

Eggs— Eggs are pale blue with fine black or purple speckles. 2-6 eggs, 18.8 mm x 13.8 mm.



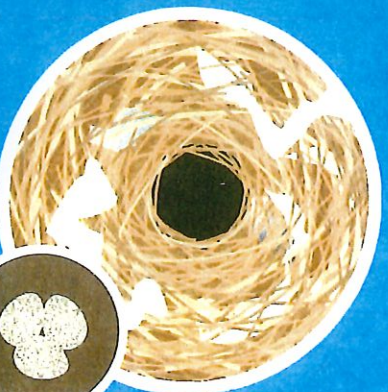
Non-Native Nests (Should Be Removed)



European Starling

Nest— Bulky, slovenly nests from coarse grasses, twigs, straw and corn husks. Large nests, but do not fill the compartment.

Eggs— Eggs are larger, pale bluish or greenish-white, unmarked. More tapered than round. 3-6 eggs, 29.2 mm x 21.2 mm.



House Sparrow

Nest— Large, bulky nests make out of straw, grasses, weeds and trash. Nest fills the entire compartment with just a small hole for the bird to enter.

Eggs— Eggs are white, or greenish-white, dotted with grays or browns. 1-8 eggs, 22.8 mm x 15.4 mm.

